

 Club Med
Meetings
& Events



South Africa Beach & Safari Resort





Beach Resort

The Destination

PRACTICAL INFORMATION





Practical Information

The destination



Nearby airport and station

King Shaka International Airport Durban
at 30 min

Nearby town

Durban at 30 min



Location

Nestling on the shores of the Indian Ocean, on the east coast of South Africa in the province of Kwazulu-Natal



Local information

Currency Rand

Languages: English, Zulu, Afrikaans



Formalities *

A VISA may be required, accordingly to guests' nationality



Types of plug

M Type



Time difference

CET +1 (October to March)

CET 0 (April to September)



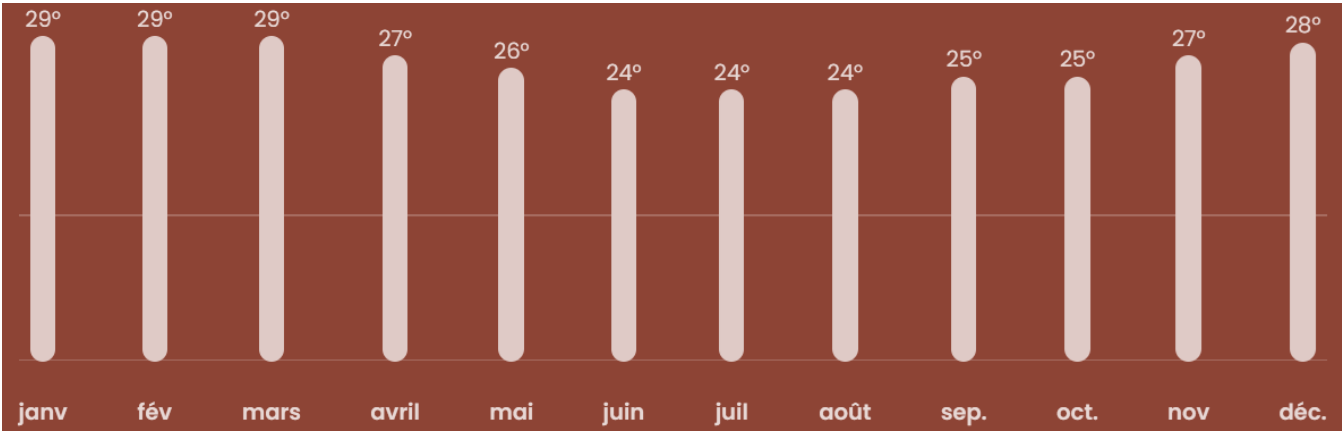


Practical information

The Climate

The climate in Durban and along the Indian Ocean coast is **subtropical**, with mild, dry winters and hot, humid summers.

Average temperatures in Durban (°C)



Average sea temperatures in Durban (°C)

	Jan	Feb	Mar	Apr	May	Jun	Jul	Aug	Sept	Oct	Nov	Dec
Sea temperature °C	26°	26°	26°	25°	24°	23°	22°	21°	22°	22°	23°	25°

Source: www.partir.com/Afrique-du-sud/Durban/1007311/quand-partir.html



The Resort





Practical information

The resort: 32 hectares

Situated on the seafront, **this new premium Resort with a Exclusive Collection Space** will offer a soothing and revitalising atmosphere, in a resolutely lifestyle spirit. Combining modernity with African influences, it will be the perfect destination for immersing yourself in South Africa's fascinating culture!

409
rooms*

Seminars & conventions

Up to

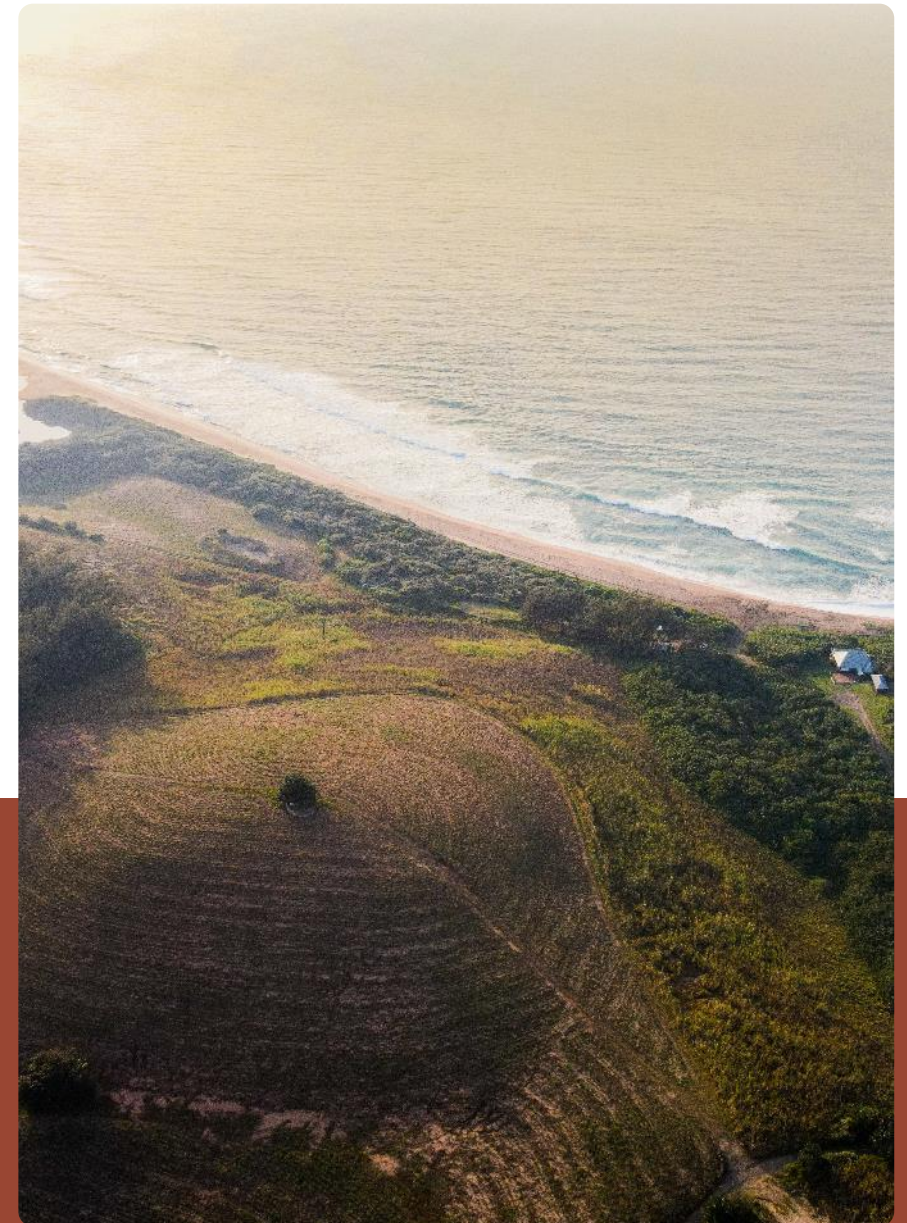
594

Pers.

Modular meeting spaces

7 meeting rooms

Team building Activities



*Subject to availability



Map





Accommodation



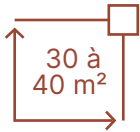


Accommodation

The rooms

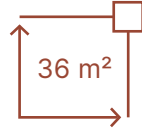
409

rooms



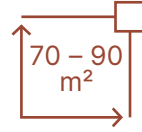
293

Superior rooms



50

Deluxe rooms



66

Exclusive Collection Space Suites



Accommodation



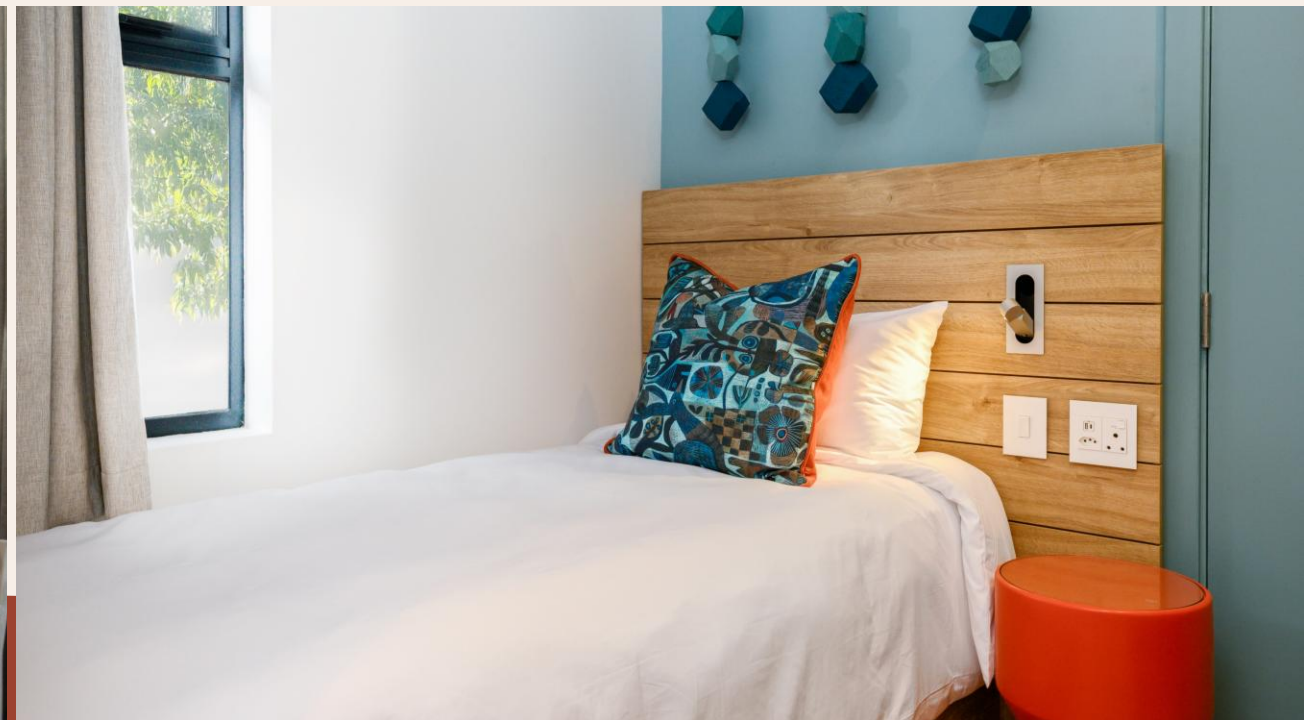


Accommodation

Service details

	Name (surface area m ²)	+ Features	+ Bathrooms	Facilities
Superior Rooms	Superior Room (35)	Sea view Furnished balcony	<p>All bathroom have a shower and separated toilet</p> <ul style="list-style-type: none"> • 1 Hair-dryer with bag • Magnifying mirror • 1 trash bin in toilets room • 1 trash bin under wash basin • Dry Amenities • Linen : 1 hand towel/pax + 1 bath towel/pax + 1 bathmat • Ahava wet amenities of 1 shampoo 400ml / 1 shower gel 400ml / 1 hair conditioner 400 ml/ 1 body lotion 400ml/ 1 hand soap 400ml 	<ul style="list-style-type: none"> • Laundry (extra charge) • Extra pillows & blanket on demand • IPTV • Free Wi-Fi access • Luggage delivery in front of the room
	Interconnecting Superior Rooms (70)			
	Family Superior Room (42)			
	Family Superior Room Interconnecting Superior Room (78)			
	Family Themed Superior Room (43)			
	Family Themed Superior Room Interconnecting Superior Room (78)			
Deluxe Rooms	Deluxe Room (36)	Sea view Furnished balcony Salon area	<ul style="list-style-type: none"> • 1 non-slip robber mat • Kids stepper upon request • 2 Tumblers with coaster or glass cover 	<ul style="list-style-type: none"> • Laundry (extra charge) • Extra pillows & blanket on demand • IPTV • Free Wi-Fi access • Luggage delivery in front of the room • Mini bar
	Deluxe Room connecting with superior room (72)			

Mockup Room – Superior Room



Mockup Deluxe Room





Superior Room Lay-Out

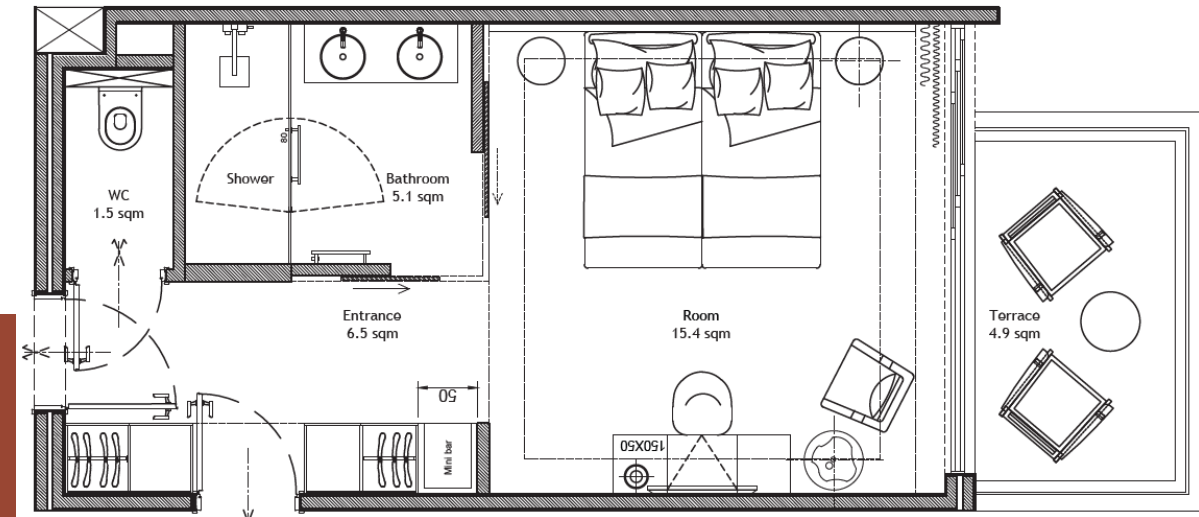
Club Room - C2



Main Bedroom



Main Bedroom - desk view





Superior Room Lay-Out

Club Room – C3



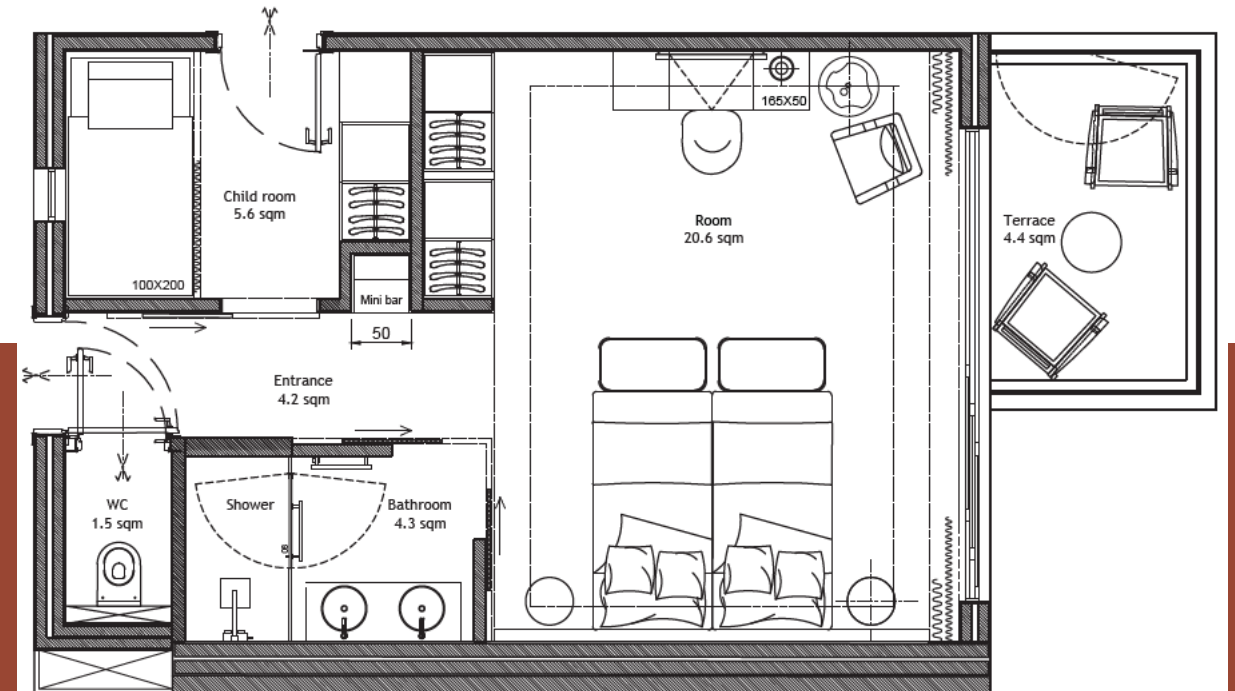
Main Bedroom – Bed view



Main Bedroom – view from the terrace



Second Bedroom



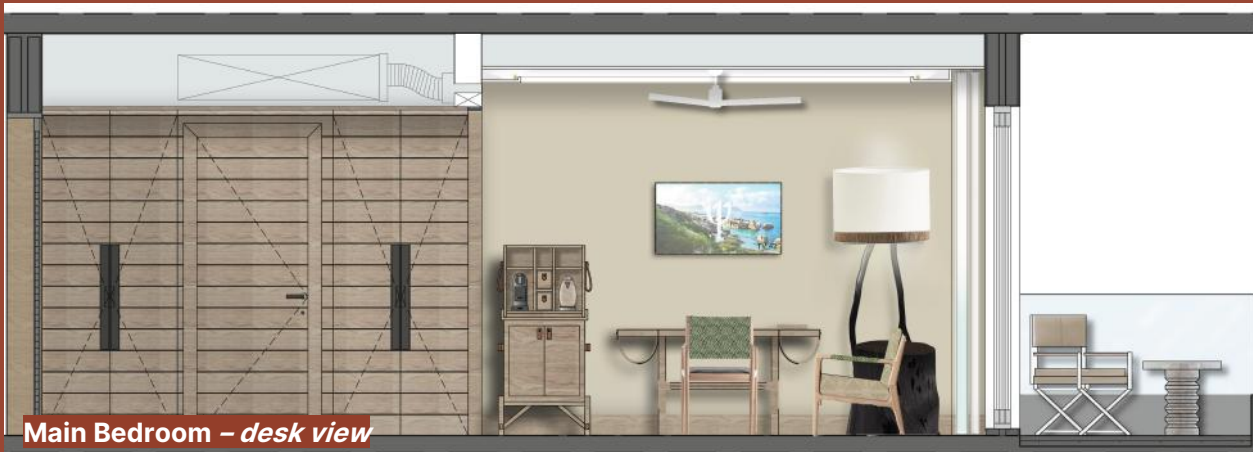


Deluxe Room Lay-Out

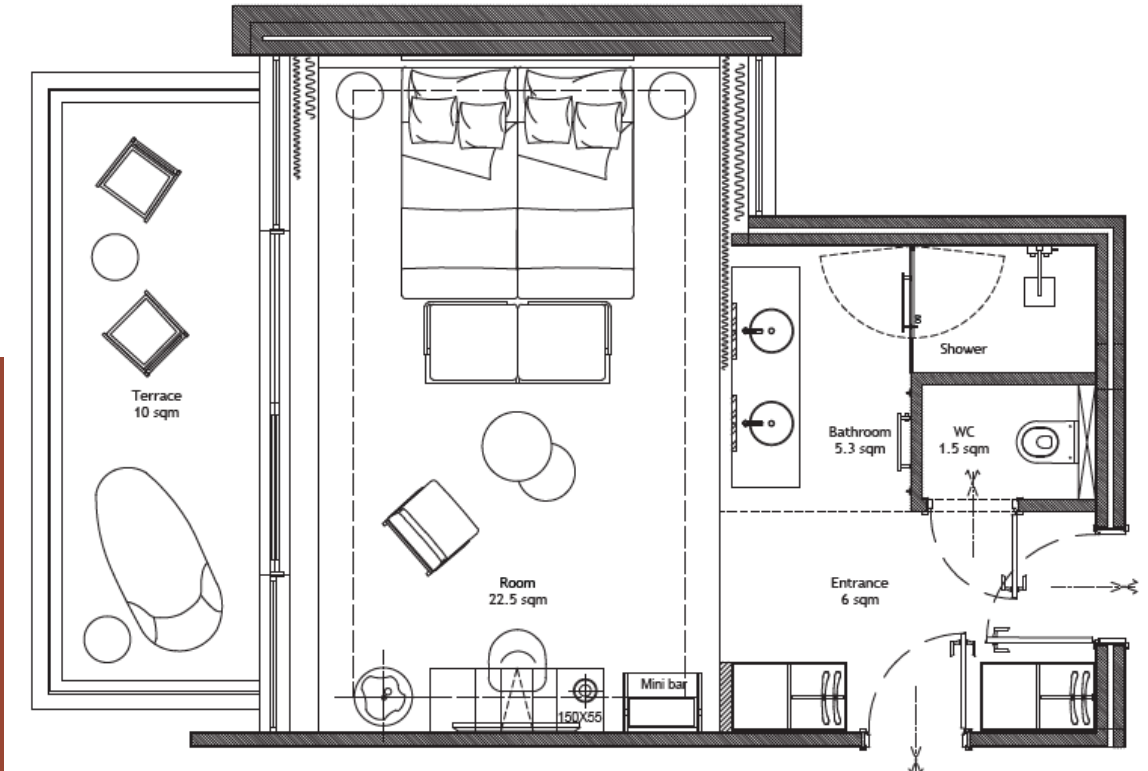
Deluxe Room - A2



Main Bedroom - Bed view



Main Bedroom - desk view





Ilanga

EXCLUSIVE COLLECTION SPACE

Nestling above the estuary, the Ilanga area unveils its villa-suites, a well-kept secret close to the spa. Take advantage of the Club Med Resort's facilities and activities while enjoying the luxury of privacy.



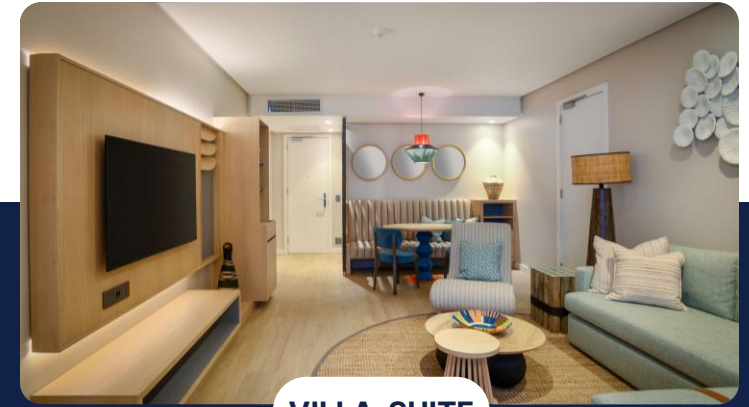
PRIVATE LOUNGE

A lively place with vibrant and warm colors, energizing the heart of the resort. Its interior design smartly incorporates South African influences. The lobby bar offers exclusive beverage options, served by flute at 6pm, alongside light snacks for a refined and enjoyable experience.



PRIVATE POOL

This swimming pool is exclusively reserved for residents of the Ilanga area.



VILLA-SUITE

Spacious suites between 70m2 and 90m2 with sea views. Gourmet meals prepared by a chef and served in the comfort of your villa-suite.

Ilanga E.C. Space

Villa-Suites

66 rooms



Lobby

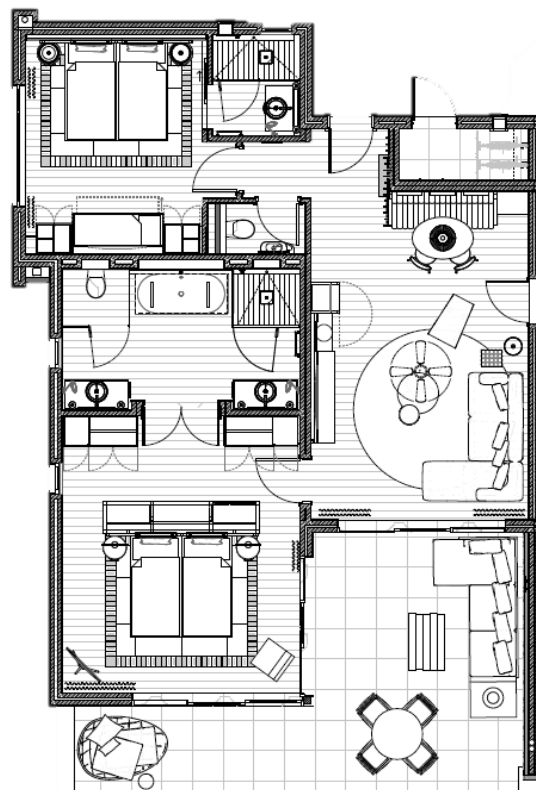
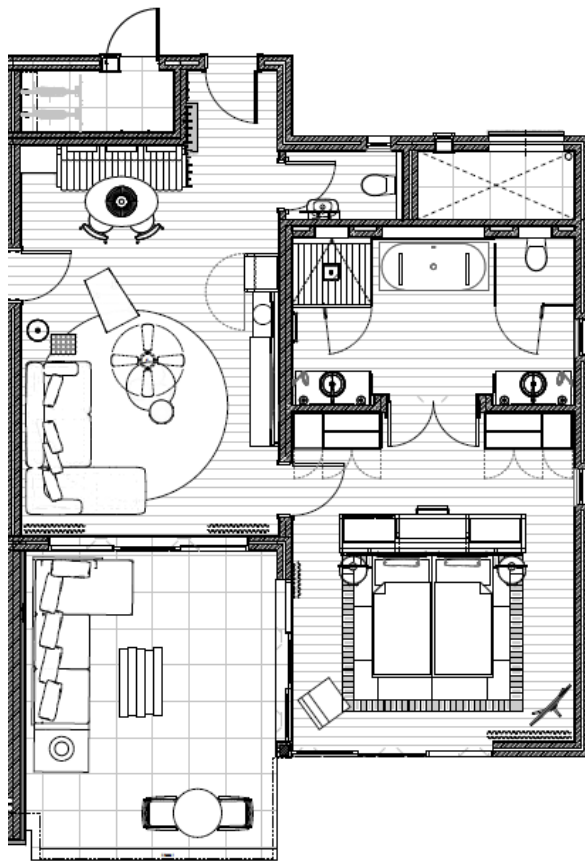


Pool





Exclusive Collection Suites



Included:

- All bathroom have a bathtub, separated shower and separated toilet
- Separated lounge area
- Furnished balcony
- Espresso Machine Mini Bar (refilled daily)
- Bathrobe & Slippers
- Branded Welcome amenities
- Daily house keeping
- Room service for continental breakfast
- Gourmet meals prepared by a chef and served in the comfort of your villa-suite.
- Individual babysitting services on request



No plastic bottles in rooms – glass water bottle (EC standard).

Mockup Exclusive Collection Suite



Restaurants & Bars





Food & Drinks Areas

Oceana Main Restaurant



Nguni Gourmet Club & Bar



Injabulo Main Bar



Dunes Beach Bar



Family Pool Bar



Exclusive Collection Lounge Bar





Restaurant principal Oceana

The restaurant includes 5 ocean-themed dining areas, a wine cellar, and an outdoor terrace, offering a culinary experience combining African, Asian, European, and Mediterranean influences.

ESPACE CRUSTACÉ



ESPACE POISSON



BUFFET



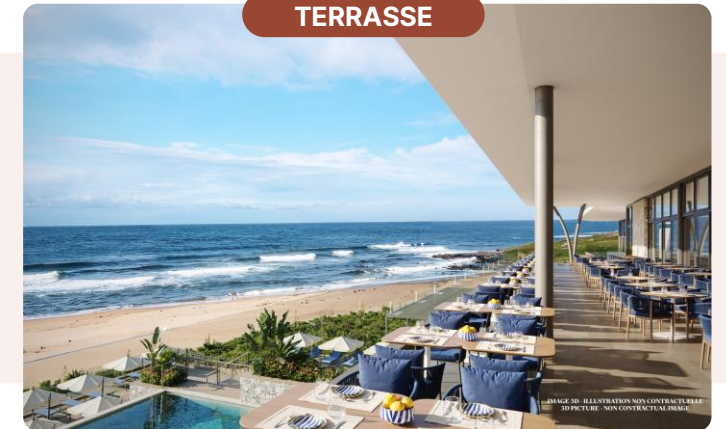
ESPACE RECIF



ESPACE BALEINE



TERRASSE





Gourmet Club

Restaurants & Bars

NGUNI GOURMET CLUB

Dive into a unique culinary journey where land meets sea. Our menu celebrates local flavors with fresh, handpicked ingredients and premium cuts, delivering a refined dining experience. From ocean treasures to farm delights, each dish reflects the rich taste and vibrant heritage of Southern Africa.

Area : 389m2



Indoor

151 pax

Outdoor

80 pax

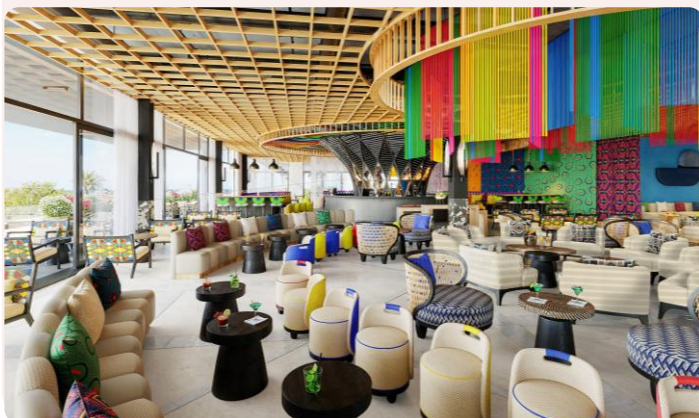




Bars

Restaurants & Bars

INJABULO MAIN BAR



LOUNGE BAR (ZEN POOL)



DUNES BEACH BAR

- Seated capacities : 100 pax
- Area : Entrance area External Standing & Lounge : 120m² ; Internal Lounge : 61m² ; Ocean facing : 115m²



Meetings & Events Space





Convention Center



3D IMAGE- NON CONTRACTUAL ILLUSTRATIONS

Up to 594 pax capacity in total and 450 pax in the plenary room.

- The rental of the meeting room includes: Smart Screen, Magic Touch, presenters' toolbox (post it, markers) Paperboard
- For each half day, the Club Coffee break is included
- Cozy Corners are available in the Lobby, offering in free access hot beverages & water
- Self contained Kitchen



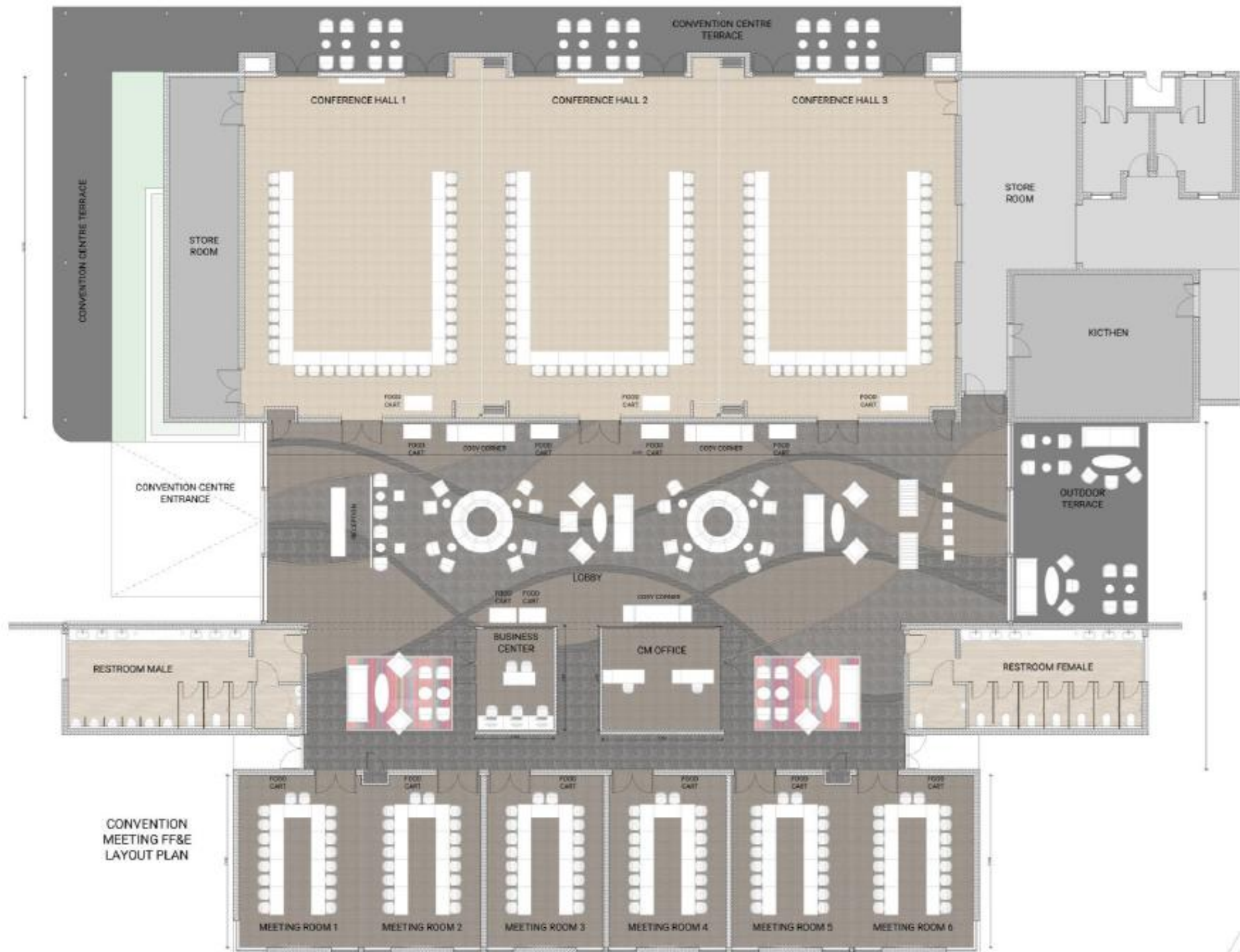


Meeting Rooms

Inside the Resort

Room Name	Size		U-Shape	Classroom	In Theater
	Meters	m ²			
Namaka 1 + 2 + 3 (Ballroom)			-	-	450
Namaka 1			38	54	126
Namaka 2			38	54	126
Namaka 3			38	54	126
Drakensberg			16	18	24
Karoo			16	18	24
Jruger			16	18	24
Marakele			16	18	24

9
meetings
rooms up
to 500 pax

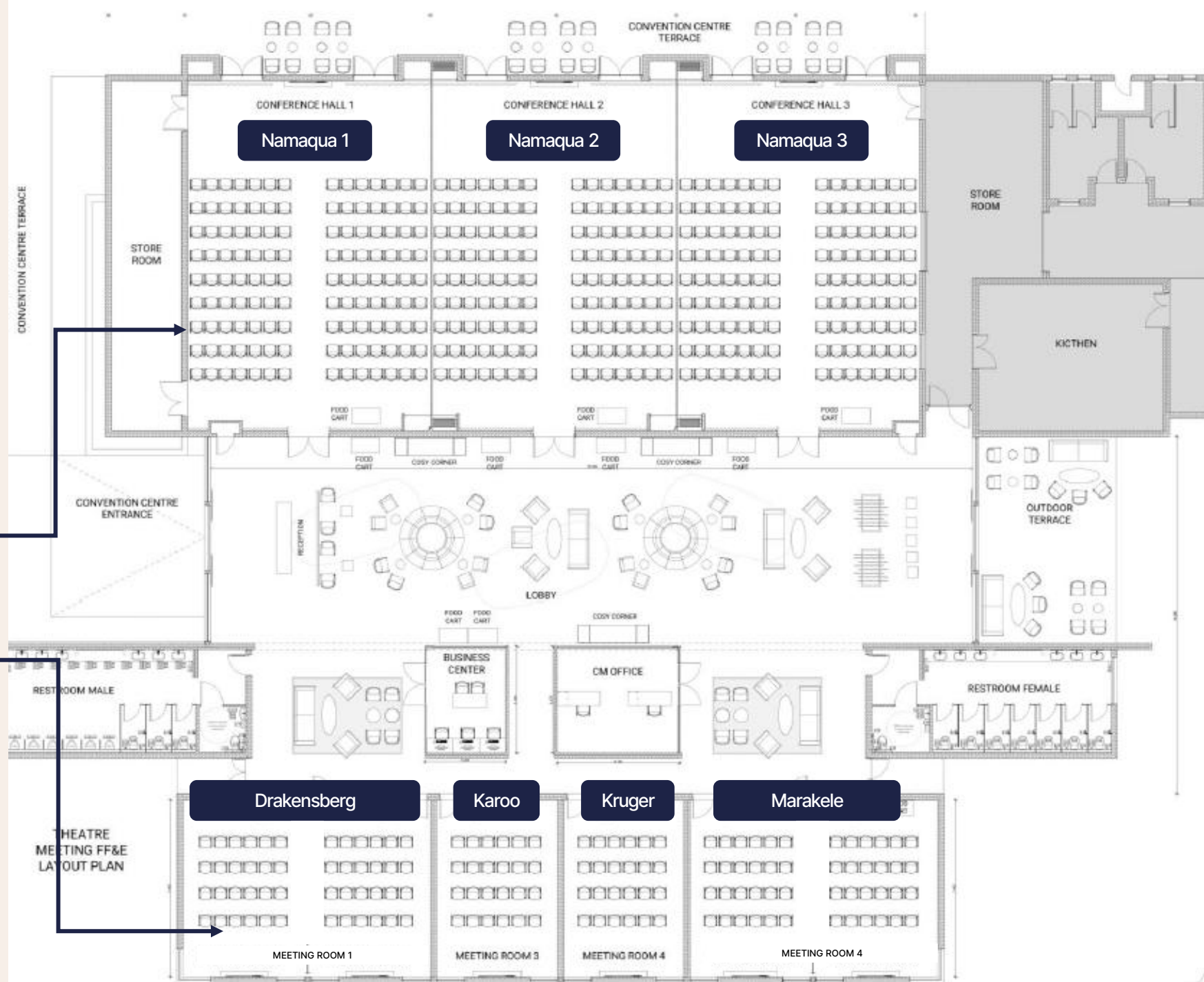




Convention Center

Plenary Configuration

- 150 pax per room in the conference area
- 450 pax in the plenary hall
- 24 to 48 pax per room in the meeting area

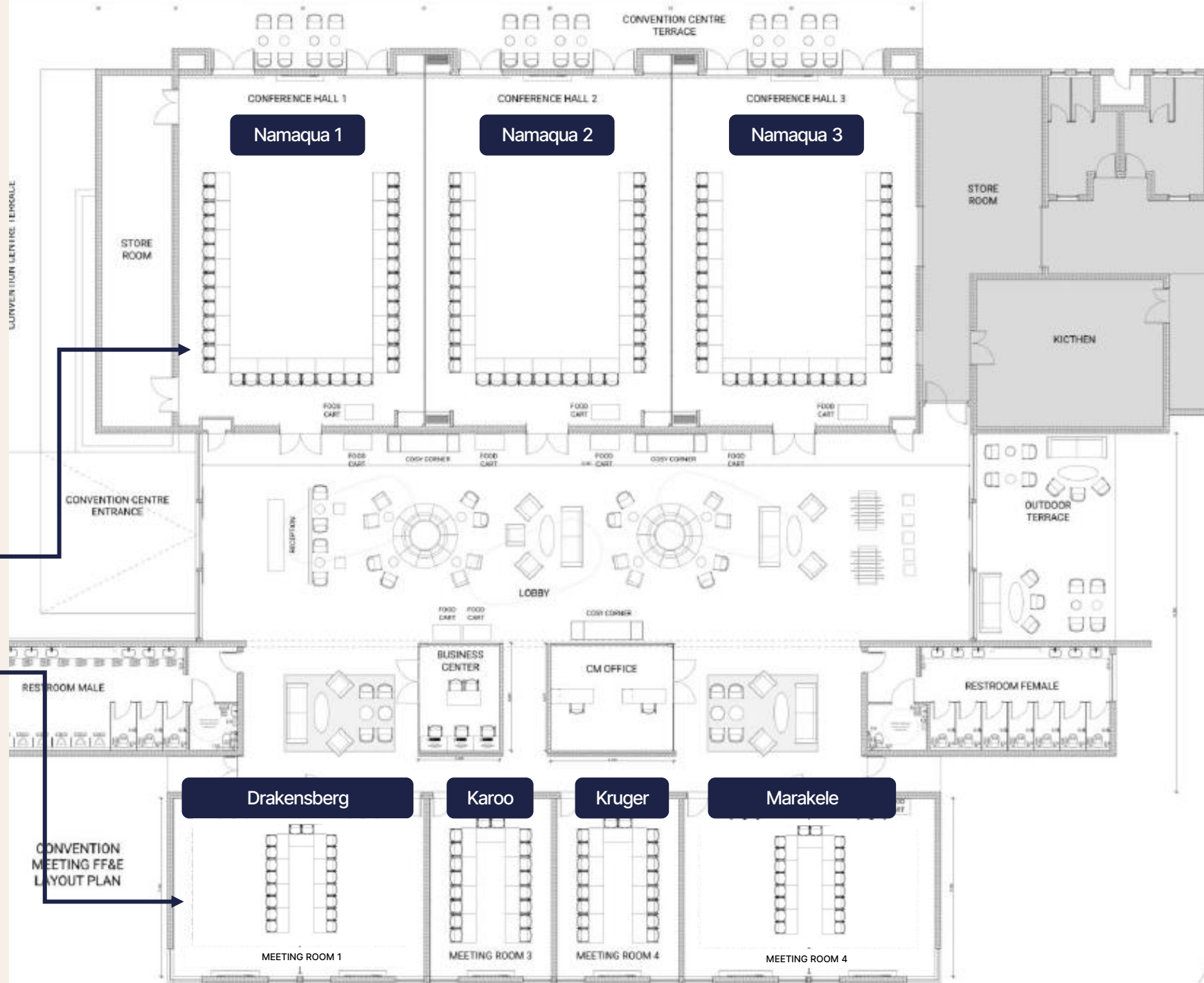




Convention Center

U-shaped Configuration

- 38 pax per room in the conference area
- 16 pax per room in the meeting area





Convention Center

Classroom Configuration

- 54 pax per room in the conference area
- 18 to 36 pax per room in the meeting area





Leisure

SPORTS & ACTIVITIES,
RELAXATION, DISCOVERY





Sports & Leisure

Experience the resort by mixing and matching your perfect blend of sports, relaxation, celebration, fitness, and exploration.

FACILITIES

Main swimming pool,
Zen swimming pool,
EC swimming pool,
Cardio-training rooms,
3 tennis courts,
6 padel courts
Volleyball courts,
Bocce courts,
Multi-sports ground,
Flying trapeze,
Archery



LAND SPORTS & RECREATION

Group classes

Surf school (1st Club Med surf school included),
Gravel Bike,
Beach and Touch Rugby,
Circus school,
Archery,
Fitness school

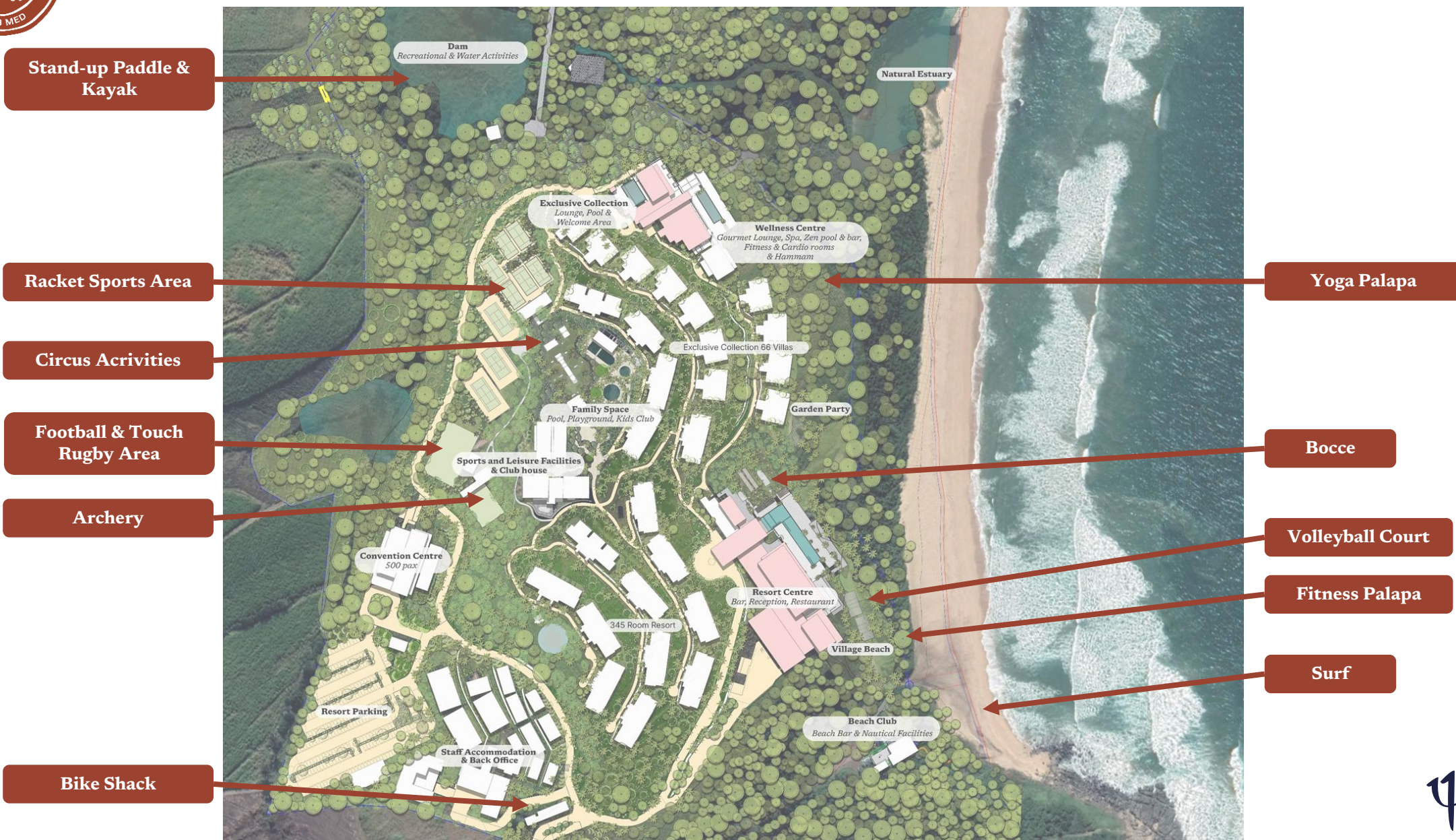
Free access

Kayak, Stand up Paddle Beach-volley,
Pétanque, hammam, fitness room/cardio-training Club Med Gym®





Activities & Leisure





Excursions

Only à la carte options

Safari experience

- Full-day or half-day safaris near the resort in a UNESCO World Heritage Site with a wildlife rehabilitation program.
- Tasting safari

Culture

- Durban History and Heritage
- Zulu History and Heritage
- South African Cooking Classes
- Cultural Tours

Sea discovery

- Whale and dolphin watching boat trips
- Sea fishing trips (beginners and advanced)

Sport activities

- Golf
- Horseback Riding
- Electric Bike Tours in a Nature Reserve
- Snorkeling at Ali Shoal
- Hiking in the Valley of 1000 Hills

Other Leisure activities

- Half-day shopping excursion in Umhlanga

The final list of excursions will be validated closer to the opening.





Spa



EQUIPMENTS

9 individual treatment rooms

1 duo treatment cabin

Pedicure and manicure salon

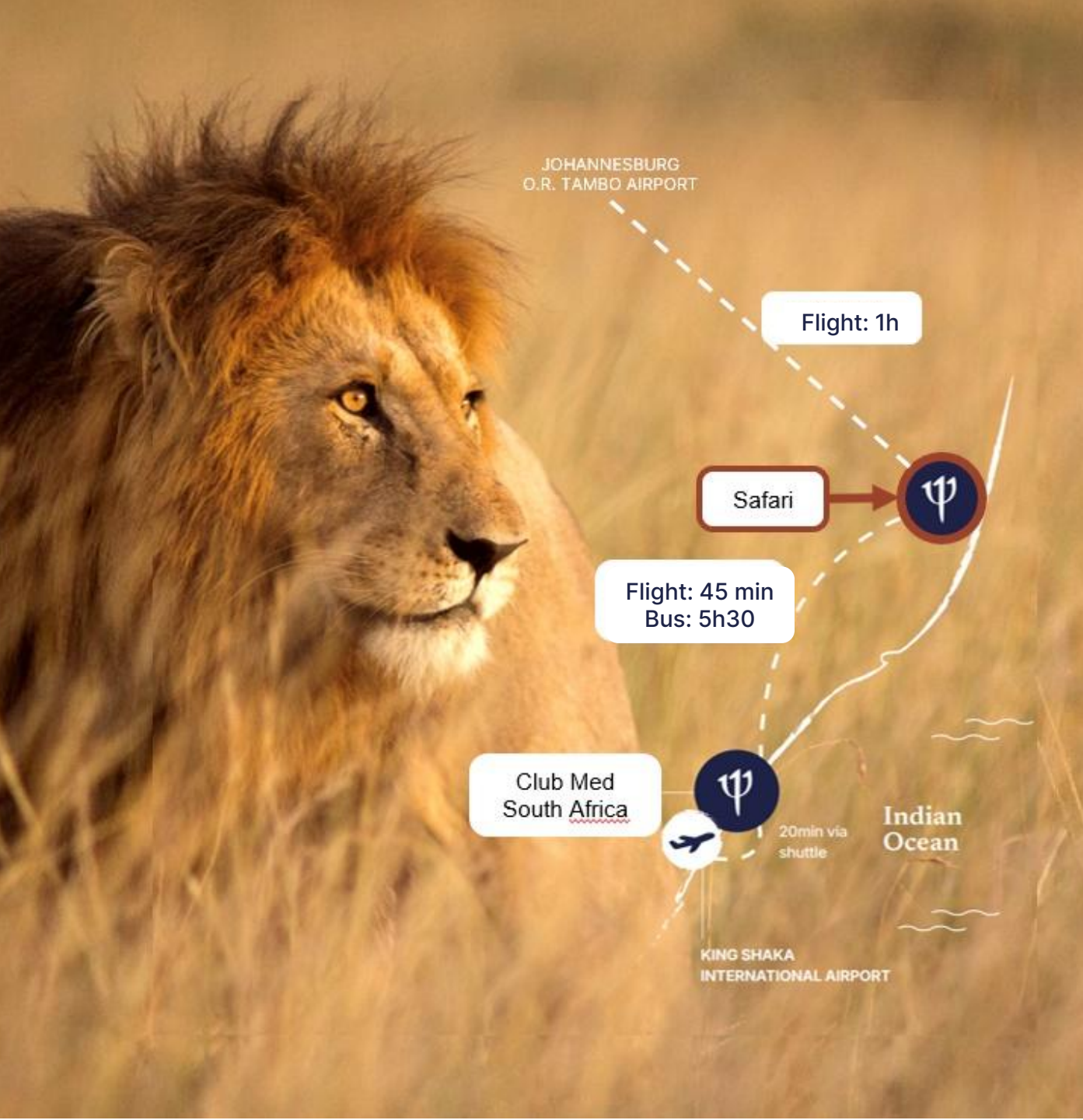
Indoor and outdoor relaxation area

Dedicated Hammam





Mpilo Safari Lodge



Mpilo Lodge

Destination

Location

Mpilo Private Game Reserve

KwaZulu Natal region, near the town of Pongola, just below Eswatini (formerly Swaziland).

Transport

5hrs 30mins by car including breaks or 45mins by plane between the Beach Resort and the Safari.

When to visit

Open all year

Best June to Mid-November

For how long

Recommended average length of stay: 2 nights - 3 days or 3 nights / 4 days



Key information

The ultimate safari experience* for an unforgettable incentive, perfectly complementing a seaside stay or seminar.

75
Rooms

18 000
Hectares of Big 5 nature reserves in KwaZulu-Natal (standard = 10,000 ha)



Accommodations

- **1 Adult zone** for adults with private lounge and jacuzzi (lodge minority)
- **1 Family zone**, including connecting rooms (most lodges)

Common Infrastructures & Experiences

- Natural swimming pool
- Food & Drinks services (bar, restaurant)
- Daytime and evening entertainment, immersion in nature and local culture



Detailed Offer





Facilities



Main Restaurant

All Day Dining - from 7am to 10pm

Buffet Area

Generous buffets throughout the day. Local cuisine highlighting, both traditional and fusion, with vegan and gluten-free options.

Food Offer

- Light continental breakfast (5:30–7:00 AM) before the morning drive
- Pre drive snack & coffee in Grab & Go at the loading areas
- Full buffet breakfast after morning drive (until 11:00 AM)
- Buffet lunch (12:00–2:30 PM)
- Buffet dinner (6:30–10:00 PM)

Boma Area

Evening dining experience centered around barbecue tradition, in an open-air setting.

Food Offer

- Dinner only (6:30 to 10:00 PM)
- Choice between a set menu (3 options)



Main Bar

Relaxed, all-day venue for drinks and light bites.

Food & Drink Offer

- Afternoon snacks (3:00–4:00 PM)
- Pre-dinner apéritif with light food pairings

Lodge Center

Main Pool

- For adults & families

Zen Corner

- Reading room
- Library
- Workshops area

Local Sales & Services

- Small shop with local wines
- Food products
- Private safari photoshoot options



Family Zone

- Sheltered outdoor space for family activities
- Kids Club infrastructure
- Kids Pool

Adult Zone

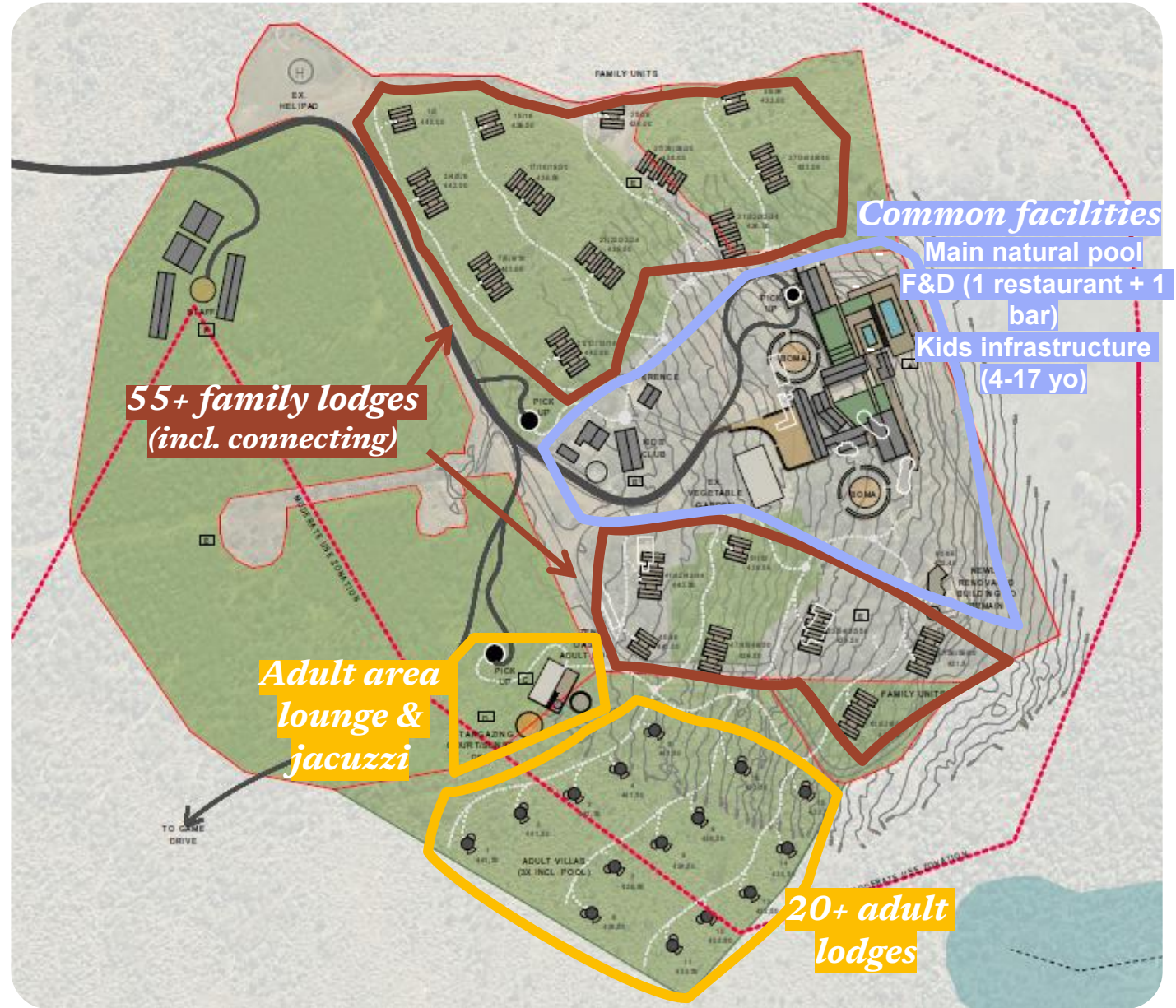
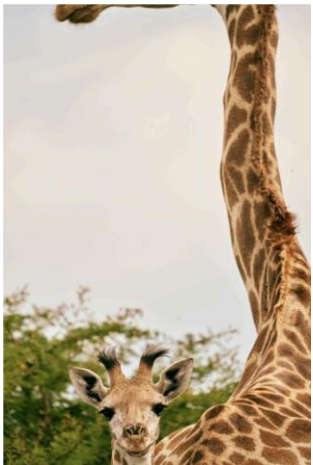
- Panoramic terrace
- Jacuzzi
- Cozy Corner with soft drinks in self-service





Map

+ 18 000 hectares of natural reserve with Big 5



Safari Experience





Safari Drive Experience INCLUDED

Safari Information Desk

The Safari Information Desk, located in the library area, provides guests with all necessary safari-related information and offers additional personalized services.

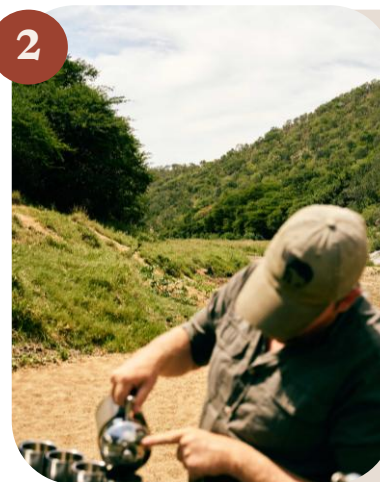
1



The Drive's Outline

- Set out to spot the Big Five in their natural habitat. Note that there is no guarantee of observing them on every outing.
- Classic Safari: **Two drives per day** for adults and kids from 6yo, early morning and sunset. Duration between 2h30 & 3h
- Note that the duration of a safari drive is variable.

2



Comfort & Services

- Drinking water available throughout the drive.
- One stop included with breakfast – coffee, tea, snacks (morning drive) or aperitif service (sundowners)
- blanket available in case of chill temperature
- Binoculars are available on board.

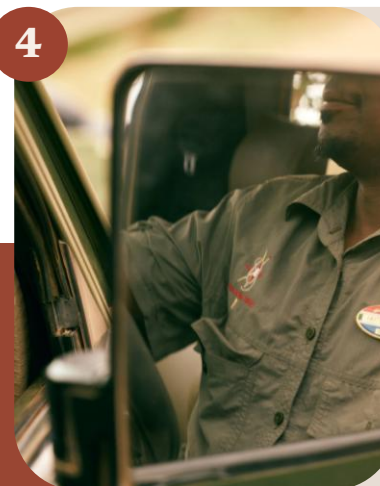
3



Vehicles & Safety

- 10 pax per vehicle
- Open-air elevated off-road vehicles
- First aid kit available in every vehicle

4



Rangers

- English-speaking driver guides and trackers
- Trained to follow ABTA animal welfare and wildlife viewing guidelines.
- Personalized explanations about local fauna and flora



Practical Guide

Health

- **Mosquitoes & insects:** wear covering clothing and use insect repellent.
- **Avoid stagnant water**



Équipement

- **Neutral** colors are recommended to avoid attracting insects and to blend into the landscape. Avoid black clothing.
- Adjust your attire to account for **cool mornings** and **warm afternoons**.
- Comfortable **closed-toe shoes** are necessary.
- A hat, cap, and sun protection.
- **A pair of binoculars** available per safari vehicle.
- **A flashlight** available in each tent.

Sécurité

- **Stay in the vehicle when instructed by the ranger**, keep a safe distance, and do not feed or interact with wildlife.
- **Silence is required:** speak in whispers, turn off phones, and avoid playing music.
- Do not lean your arms or head outside the vehicle, due to potential hazards (branches, animals).
- **No smoking**, as it poses fire risks and can stress the animals.



Club Med
Meetings
& Events