

# BODRUM, The Turkish St Tropez

# TURKEY

From 30 June till 3 September - Every Monday, Thursday & Saturday

## Mandarin Resort Hotel 4★

Rates per person in US\$ including roundtrip air ticket with airport taxes, transfers, travel insurance and accommodation on **all inclusive** basis.

**From 30/6 till 9/7 and from 21/8 till 3/9**

Rates per person	Room type	4 nights	5 nights	6 nights	7 nights
In a triple room	Standard	\$580	\$625	\$670	\$690
In a double room	Standard	\$600	\$650	\$700	\$725
In a single room	Standard	\$700	\$775	\$850	\$900
1st Child (2-11.99)	Standard	\$400	\$400	\$400	\$375

**From 10/7 till 20/8**

In a triple room	Standard	\$680	\$750	\$820	\$865
In a double room	Standard	\$700	\$775	\$850	\$900
In a single room	Standard	\$840	\$950	\$1060	\$1145
1st Child (2-11.99)	Standard	\$400	\$400	\$400	\$375

No direct access to the beach.

On certain dates, especially during holidays, rates may be higher. Guests departing or returning on a Saturday pay a supplement of \$25 per way. High season supplement of \$50 for any departure between 11 and 25/8.



## Parkim Ayaz Hotel 4★

Rates per person in US\$ including roundtrip air ticket with airport taxes, transfers, travel insurance and accommodation on **all inclusive** basis.

**From 30/6 till 7/7 and from 26/8 till 3/9**

Rates per person	Room type	4 nights	5 nights	6 nights	7 nights
In a triple room	Standard	\$680	\$750	\$820	\$865
In a double room	Standard	\$700	\$775	\$850	\$900
In a single room	Standard	\$860	\$975	\$1090	\$1180
1st Child (2-11.99)	Standard	\$400	\$400	\$400	\$375

In a triple room	Sea view	\$720	\$800	\$880	\$935
In a double room	Sea view	\$760	\$850	\$940	\$1005
1st Child (2-11.99)	Sea view	\$400	\$400	\$400	\$375

**From 8/7 till 25/8**

In a triple room	Standard	\$760	\$850	\$940	\$1005
In a double room	Standard	\$780	\$875	\$970	\$1040
In a single room	Standard	\$980	\$1125	\$1270	\$1390
1st Child (2-11.99)	Standard	\$400	\$400	\$400	\$375
In a triple room	Sea view	\$780	\$875	\$970	\$1040
In a double room	Sea view	\$820	\$925	\$1030	\$1110
1st Child (2-11.99)	Sea view	\$400	\$400	\$400	\$375

On certain dates, especially during holidays, rates may be higher. Guests departing or returning on a Saturday pay a supplement of \$25 per way. High season supplement of \$50 for any departure between 11 and 25/8.



More information and pictures available on [hoojoozat.com/nakhahotels](http://hoojoozat.com/nakhahotels)

### 3 FLIGHTS PER WEEK - DAYTIME FLIGHTS

BODRUM - TURKEY

#### WOW Bodrum Resort 4★

Rates per person in US\$ including roundtrip air ticket with airport taxes, transfers, travel insurance and accommodation on **ultra all inclusive** basis.

**From 30/6 till 19/7**

Rates per person	Room type	4 nights	5 nights	6 nights	7 nights
In a triple room	Standard	\$760	\$850	\$940	\$1005
In a double room	Standard	\$800	\$900	\$1000	\$1075
In a single room	Standard	\$980	\$1125	\$1270	\$1390
1st Child (2-10.99)	Standard	\$400	\$400	\$400	\$375

**From 20/7 till 26/7 and 26/8 till 3/9**

In a triple room	Standard	\$780	\$875	\$970	\$1040
In a double room	Standard	\$820	\$925	\$1030	\$1110
In a single room	Standard	\$1040	\$1200	\$1360	\$1495
1st Child (2-10.99)	Standard	\$400	\$400	\$400	\$375

**From 27/7 till 25/8**

In a triple room	Standard	\$820	\$925	\$1030	\$1110
In a double room	Standard	\$860	\$975	\$1090	\$1180
In a single room	Standard	\$1100	\$1275	\$1450	\$1600
1st Child (2-10.99)	Standard	\$400	\$400	\$400	\$375

Rates are valid for bookings received before 30/6.

On certain dates, especially during holidays, rates may be higher. Guests departing or returning on a Saturday pay a supplement of \$25 per way. High season supplement of \$50 for any departure between 11 and 25/8.



#### Izer Hotel Beach Club 4★

Rates per person in US\$ including roundtrip air ticket with airport taxes, transfers, travel insurance and accommodation on **all inclusive** basis.

**From 30/6 till 28/8**

Rates per person	Room type	4 nights	5 nights	6 nights	7 nights
In a triple room	Club land view	\$800	\$900	\$1000	\$1075
In a double room	Club land view	\$840	\$950	\$1060	\$1145
In a single room	Club land view	\$1060	\$1225	\$1390	\$1530
1st Child (2-11.99)	Club land view	\$400	\$400	\$400	\$375
In a triple room	Hotel land view	\$860	\$975	\$1090	\$1180
In a double room	Hotel land view	\$900	\$1025	\$1150	\$1250
1st Child (2-11.99)	Hotel land view	\$400	\$400	\$400	\$375

**From 29/8 till 3/9**

In a triple room	Club land view	\$700	\$775	\$850	\$900
In a double room	Club land view	\$740	\$825	\$910	\$970
In a single room	Club land view	\$920	\$1050	\$1180	\$1285
1st Child (2-11.99)	Club land view	\$400	\$400	\$400	\$375
In a triple room	Hotel land view	\$740	\$825	\$910	\$970
In a double room	Hotel land view	\$780	\$875	\$970	\$1040
1st Child (2-11.99)	Hotel land view	\$400	\$400	\$400	\$375

On certain dates, especially during holidays, rates may be higher. Guests departing or returning on a Saturday pay a supplement of \$25 per way. High season supplement of \$50 for any departure between 11 and 25/8.



#### Mondays

BEY/BJV 09:30-11:00  
BJV/BEY 12:00-13:30

#### Thursdays

BEY/BJV 13:30-15:00  
BJV/BEY 16:00-17:30

#### Saturdays

BEY/BJV 19:00-20:30  
BJV/BEY 21:30-23:00



More information and pictures available on [hoojoozat.com/nakhalhotels](http://hoojoozat.com/nakhalhotels)

**Samara Hotel 5★**

Rates per person in US\$ including roundtrip air ticket with airport taxes, transfers, travel insurance and accommodation on **all inclusive** basis.

**From 30/6 till 10/7 and from 30/8 till 3/9**

Rates per person	Room type	4 nights	5 nights	6 nights	7 nights
In a triple room	Garden view	\$820	\$925	\$1030	\$1110
In a double room	Garden view	\$860	\$975	\$1090	\$1180
In a single room	Garden view	\$1100	\$1275	\$1450	\$1600
1st Child (2 to 6.99)*	Garden view	\$400	\$400	\$400	\$375
1st Child (7 to 11.99)*	Garden view	\$640	\$700	\$760	\$795

**From 11/7 till 29/8**

In a triple room	Garden view	\$980	\$1125	\$1270	\$1390
In a double room	Garden view	\$1020	\$1175	\$1330	\$1460
In a single room	Garden view	\$1340	\$1575	\$1810	\$2020
1st Child (2 to 6.99)*	Garden view	\$400	\$400	\$400	\$375
1st Child (7 to 11.99)*	Garden view	\$720	\$800	\$880	\$935

\* Up to 2 children can be accommodated in parents' room.

On certain dates, especially during holidays, rates may be higher. Guests departing or returning on a Saturday pay a supplement of \$25 per way. High season supplement of \$50 for any departure between 11 and 25/8.

**Salmakis Beach Hotel 4★**

Rates per person in US\$ including roundtrip air ticket with airport taxes, transfers, travel insurance and accommodation on **half board** basis.

Rates per person	Room type	4 nights	5 nights	6 nights	7 nights
In a triple room	Garden view	\$860	\$975	\$1090	\$1180
In a double room	Garden view	\$900	\$1025	\$1150	\$1250
In a single room	Garden view	\$1140	\$1325	\$1510	\$1670
1st Child (2-6.99)	Garden view	\$400	\$400	\$400	\$375
1st Child (7-11.99)	Garden view	\$660	\$725	\$790	\$830
In a triple room	Sea view	\$900	\$1025	\$1150	\$1250
In a double room	Sea view	\$940	\$1075	\$1210	\$1320
In a single room	Sea view	\$1220	\$1425	\$1630	\$1810
1st Child (2-6.99)	Sea view	\$400	\$400	\$400	\$375
1st Child (7-11.99)	Sea view	\$680	\$750	\$820	\$865

On certain dates, especially during holidays, rates may be higher. Guests departing or returning on a Saturday pay a supplement of \$25 per way. High season supplement of \$50 for any departure between 11 and 25/8.

**Mondays**

BEY/BJV 09:30-11:00  
BJV/BEY 12:00-13:30

**Thursdays**

BEY/BJV 13:30-15:00  
BJV/BEY 16:00-17:30

**Saturdays**

BEY/BJV 19:00-20:30  
BJV/BEY 21:30-23:00



More information and pictures available on [hoojoozat.com/nakhahotels](http://hoojoozat.com/nakhahotels)

### 3 FLIGHTS PER WEEK - DAYTIME FLIGHTS

BODRUM - TURKEY

#### La Blanche Island 5★

Rates per person in US\$ including roundtrip air ticket with airport taxes, transfers, travel insurance and accommodation on **all inclusive** basis.

Rates per person	Room type	4 nights	5 nights	6 nights	7 nights
In a triple room	Standard land view	\$920	\$1050	\$1180	\$1285
In a double room	Standard land view	\$980	\$1125	\$1270	\$1390
In a single room	Standard land view	\$1260	\$1475	\$1690	\$1880
1st Child (2-11.99)	Standard land view	\$400	\$400	\$400	\$375

On certain dates, especially during holidays, rates may be higher. Guests departing or returning on a Saturday pay a supplement of \$25 per way. High season supplement of \$50 for any departure between 11 and 25/8.



#### Resort Isil Club 4★

Rates per person in US\$ including roundtrip air ticket with airport taxes, transfers, travel insurance and accommodation on **all inclusive** basis.

From 30/6 till 15/7 and from 1/9 till 3/9

Rates per person	Room type	4 nights	5 nights	6 nights	7 nights
In a triple room	Club garden view	\$980	\$1125	\$1270	\$1390
In a double room	Club garden view	\$1040	\$1200	\$1360	\$1495
In a single room	Club garden view	\$1360	\$1600	\$1840	\$2055
1st Child (2-10.99)	Club garden view	\$400	\$400	\$400	\$375
In a triple room	Main building garden view	\$1040	\$1200	\$1360	\$1495
In a double room	Main building garden view	\$1100	\$1275	\$1450	\$1600
1st Child (2-10.99)	Main building garden view	\$400	\$400	\$400	\$375

From 16/7 till 31/8

In a triple room	Club garden view	\$1080	\$1250	\$1420	\$1565
In a double room	Club garden view	\$1140	\$1325	\$1510	\$1670
In a single room	Club garden view	\$1500	\$1775	\$2050	\$2300
1st Child (2-10.99)	Club garden view	\$400	\$400	\$400	\$375
In a triple room	Main building garden view	\$1160	\$1350	\$1540	\$1705
In a double room	Main building garden view	\$1220	\$1425	\$1630	\$1810
1st Child (2-10.99)	Main building garden view	\$400	\$400	\$400	\$375

On certain dates, especially during holidays, rates may be higher. Guests departing or returning on a Saturday pay a supplement of \$25 per way. High season supplement of \$50 for any departure between 11 and 25/8.



More information and pictures available on [hoojoozat.com/nakhalhotels](http://hoojoozat.com/nakhalhotels)

**Voyage Bodrum Hotel 5★ Deluxe (Adults only 16+)**

Rates per person in US\$ including roundtrip air ticket with airport taxes, transfers, travel insurance and accommodation on **ultra all inclusive** basis.

**From 30/6 till 25/8**

Rates per person	Room type	4 nights	5 nights	6 nights	7 nights
In a triple room	Standard balcony land view	\$1040	\$1200	\$1360	\$1495
In a double room	Standard balcony land view	\$1100	\$1275	\$1450	\$1600
In a single room	Standard balcony land view	\$1460	\$1725	\$1990	\$2230
In a triple room	Standard balcony sea view	\$1140	\$1325	\$1510	\$1670
In a double room	Standard balcony sea view	\$1200	\$1400	\$1600	\$1775
In a single room	Standard balcony sea view	\$1580	\$1875	\$2170	\$2440

**From 26/8 till 3/9**

In a triple room	Standard balcony land view	\$900	\$1025	\$1150	\$1250
In a double room	Standard balcony land view	\$960	\$1100	\$1240	\$1355
In a single room	Standard balcony land view	\$1240	\$1450	\$1660	\$1845
In a triple room	Standard balcony sea view	\$980	\$1125	\$1270	\$1390
In a double room	Standard balcony sea view	\$1040	\$1200	\$1360	\$1495
In a single room	Standard balcony sea view	\$1360	\$1600	\$1840	\$2055

On certain dates, especially during holidays, rates may be higher. Guests departing or returning on a Saturday pay a supplement of \$25 per way. High season supplement of \$50 for any departure between 11 and 25/8.



**Voyage Turkbuku Hotel 5★ Deluxe**

Rates per person in US\$ including roundtrip air ticket with airport taxes, transfers, travel insurance and accommodation on **ultra all inclusive** basis.

**From 30/6 till 25/8**

Rates per person	Room type	4 nights	5 nights	6 nights	7 nights
In a double room	Standrad French balcony-Hotel	\$1060	\$1225	\$1390	\$1530
In a single room	Standrad French balcony-Hotel	\$1380	\$1625	\$1870	\$2090
In a triple room	Standrad bungalow	\$960	\$1100	\$1240	\$1355
In a double room	Standrad bungalow	\$1080	\$1250	\$1420	\$1565
In a single room	Standrad bungalow	\$1420	\$1675	\$1930	\$2160
1st Child (2-11.99)	Standrad bungalow	\$400	\$400	\$400	\$375

**From 26/8 till 3/9**

In a double room	Standrad French balcony-Hotel	\$880	\$1000	\$1120	\$1215
In a single room	Standrad French balcony-Hotel	\$1120	\$1300	\$1480	\$1635
In a triple room	Standrad bungalow	\$820	\$925	\$1030	\$1110
In a double room	Standrad bungalow	\$900	\$1025	\$1150	\$1250
In a single room	Standrad bungalow	\$1160	\$1350	\$1540	\$1705
1st Child (2-11.99)	Standrad bungalow	\$400	\$400	\$400	\$375

On certain dates, especially during holidays, rates may be higher. Guests departing or returning on a Saturday pay a supplement of \$25 per way. High season supplement of \$50 for any departure between 11 and 25/8.



**Mondays**

BEY/BJV 09:30-11:00  
BJV/BEY 12:00-13:30

**Thursdays**

BEY/BJV 13:30-15:00  
BJV/BEY 16:00-17:30

**Saturdays**

BEY/BJV 19:00-20:30  
BJV/BEY 21:30-23:00



More information and pictures available on [hoojozat.com/nakhalhotels](http://hoojozat.com/nakhalhotels)

### 3 FLIGHTS PER WEEK - DAYTIME FLIGHTS

BODRUM - TURKEY

#### Swissotel 5★ Deluxe

Rates per person in US\$ including roundtrip air ticket with airport taxes, transfers, travel insurance and accommodation on **bed and breakfast** basis.

Rates per person	Room type	4 nights	5 nights	6 nights	7 nights
In a triple room	Garden view	\$1100	\$1275	\$1450	\$1600
In a double room	Garden view	\$1300	\$1525	\$1750	\$1950
In a single room	Garden view	\$2080	\$2500	\$2920	\$3315
1st Child (2-5.99)	Garden view	\$50	\$50	\$50	\$50
1st Child (6-10.99)	Garden view	\$860	\$975	\$1090	\$1180
In a triple room	Sea view	\$1160	\$1350	\$1540	\$1705
In a double room	Sea view	\$1400	\$1650	\$1900	\$2125
In a single room	Sea view	\$2280	\$2750	\$3220	\$3665
1st Child (2-5.99)	Sea view	\$50	\$50	\$50	\$50
1st Child (6-10.99)	Sea view	\$900	\$1025	\$1150	\$1250

On certain dates, especially during holidays, rates may be higher. Guests departing or returning on a Saturday pay a supplement of \$25 per way. High season supplement of \$50 for any departure between 11 and 25/8.



#### Kefaluka Resort 5★ Deluxe

Rates per person in US\$ including roundtrip air ticket with airport taxes, transfers, travel insurance and accommodation on **all inclusive** basis.

**From 30/6 till 16/7**

Rates per person	Room type	4 nights	5 nights	6 nights	7 nights
In a double room	Sea view	\$1120	\$1300	\$1480	\$1635
In a single room	Sea view	\$1460	\$1725	\$1990	\$2230
1st Child (2-10.99)	Sea view	\$400	\$400	\$400	\$375
In a double room	Deluxe sea view	\$1160	\$1350	\$1540	\$1705
In a single room	Deluxe sea view	\$1540	\$1825	\$2110	\$2370
1st Child (3-10.99)	Deluxe sea view	\$400	\$400	\$400	\$375

**From 17/7 till 21/8**

In a double room	Sea view	\$1200	\$1400	\$1600	\$1775
In a single room	Sea view	\$1600	\$1900	\$2200	\$2475
1st Child (2-10.99)	Sea view	\$400	\$400	\$400	\$375
In a double room	Deluxe sea view	\$1280	\$1500	\$1720	\$1915
In a single room	Deluxe sea view	\$1720	\$2050	\$2380	\$2685
1st Child (2-10.99)	Deluxe sea view	\$400	\$400	\$400	\$375

**From 22/8 till 3/9**

In a double room	Sea view	\$1060	\$1225	\$1390	\$1530
In a single room	Sea view	\$1400	\$1650	\$1900	\$2125
1st Child (2-10.99)	Sea view	\$400	\$400	\$400	\$375
In a double room	Deluxe sea view	\$1140	\$1325	\$1510	\$1670
In a single room	Deluxe sea view	\$1500	\$1775	\$2050	\$2300
1st Child (2-10.99)	Deluxe sea view	\$400	\$400	\$400	\$375

On certain dates, especially during holidays, rates may be higher. Guests departing or returning on a Saturday pay a supplement of \$25 per way. High season supplement of \$50 for any departure between 11 and 25/8.



More information and pictures available on [hoojoozat.com/nakhalhotels](http://hoojoozat.com/nakhalhotels)

**Voyage Torba Hotel 5★ Deluxe**

Rates per person in US\$ including roundtrip air ticket with airport taxes, transfers, travel insurance and accommodation on **ultra all inclusive** basis.

**From 30/6 till 25/8**

Rates per person	Room type	4 nights	5 nights	6 nights	7 nights
In a triple room	Superior	\$1140	\$1325	\$1510	\$1670
In a double room	Superior	\$1200	\$1400	\$1600	\$1775
In a single room	Superior	\$1600	\$1900	\$2200	\$2475
1st Child (2-11.99)	Superior	\$400	\$400	\$400	\$375
In a double room	Standard sea side	\$1320	\$1550	\$1780	\$1985
In a single room	Standard sea side	\$1780	\$2125	\$2470	\$2790

**From 26/8 till 3/9**

In a triple room	Superior	\$920	\$1050	\$1180	\$1285
In a double room	Superior	\$980	\$1125	\$1270	\$1390
In a single room	Superior	\$1260	\$1475	\$1690	\$1880
1st Child (2-11.99)	Superior	\$400	\$400	\$400	\$375
In a double room	Standard sea side	\$1080	\$1250	\$1420	\$1565
In a single room	Standard sea side	\$1420	\$1675	\$1930	\$2160

On certain dates, especially during holidays, rates may be higher. Guests departing or returning on a Saturday pay a supplement of \$25 per way. High season supplement of \$50 for any departure between 11 and 25/8.

**Kempinski Barbaros Bay Hotel 5★ Deluxe**

Rates per person in US\$ including roundtrip air ticket with airport taxes, transfers, travel insurance and accommodation on **bed and breakfast** basis.

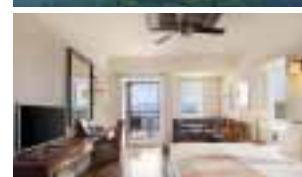
**From 30/6 till 26/8**

Rates per person	Room type	4 nights	5 nights	6 nights	7 nights
In a double room	Standard	\$1440	\$1700	\$1960	\$2195
In a single room	Standard	\$2320	\$2800	\$3280	\$3735
In a triple room	Superior sea view	\$1340	\$1575	\$1810	\$2020
In a double room	Superior sea view	\$1540	\$1825	\$2110	\$2370
In a single room	Superior sea view	\$2520	\$3050	\$3580	\$4085
1st Child (2-10.99)	Superior sea view	\$400	\$400	\$400	\$375

**From 27/8 till 3/9**

In a double room	Standard	\$1260	\$1475	\$1690	\$1880
In a single room	Standard	\$1960	\$2350	\$2740	\$3105
In a triple room	Superior sea view	\$1200	\$1400	\$1600	\$1775
In a double room	Superior sea view	\$1340	\$1575	\$1810	\$2020
In a single room	Superior sea view	\$2120	\$2550	\$2980	\$3385
1st Child (2-10.99)	Superior sea view	\$400	\$400	\$400	\$375

On certain dates, especially during holidays, rates may be higher. Guests departing or returning on a Saturday pay a supplement of \$25 per way. High season supplement of \$50 for any departure between 11 and 25/8.



More information and pictures available on [hoojoozat.com/nakhalhotels](http://hoojoozat.com/nakhalhotels)

### 3 FLIGHTS PER WEEK - DAYTIME FLIGHTS

BODRUM - TURKEY

#### Vogue Hotel & Resort 5★ Deluxe

Rates per person in US\$ including roundtrip air ticket with airport taxes, transfers, travel insurance and accommodation on **ultra all inclusive** basis.

**From 30/6 till 19/8**

Rates per person	Room type	4 nights	5 nights	6 nights	7 nights
In a triple room	Garden view	\$1300	\$1525	\$1750	\$1950
In a double room	Garden view	\$1400	\$1650	\$1900	\$2125
In a Single	Garden view	\$2080	\$2500	\$2920	\$3315
1st Child (2-10.99)	Garden view	\$400	\$400	\$400	\$375
In a triple room	Superior main building land view	\$1380	\$1625	\$1870	\$2090
In a double room	Superior main building land view	\$1500	\$1775	\$2050	\$2300
In a single room	Superior main building land view	\$2260	\$2725	\$3190	\$3630
1st Child (2-10.99)	Superior main building land view	\$400	\$400	\$400	\$375

**From 20/8 till 24/8**

In a triple room	Garden view	\$1360	\$1600	\$1840	\$2055
In a double room	Garden view	\$1460	\$1725	\$1990	\$2230
In a Single	Garden view	\$2160	\$2600	\$3040	\$3455
1st Child (2-10.99)	Garden view	\$400	\$400	\$400	\$375
In a triple room	Superior main building land view	\$1440	\$1700	\$1960	\$2195
In a double room	Superior main building land view	\$1560	\$1850	\$2140	\$2405
In a single room	Superior main building land view	\$2340	\$2825	\$3310	\$3770
1st Child (2-10.99)	Superior main building land view	\$400	\$400	\$400	\$375

**From 25/8 till 3/9**

In a triple room	Garden view	\$1160	\$1350	\$1540	\$1705
In a double room	Garden view	\$1260	\$1475	\$1690	\$1880
In a Single	Garden view	\$1840	\$2200	\$2560	\$2895
1st Child (2-10.99)	Garden view	\$400	\$400	\$400	\$375
In a triple room	Superior main building land view	\$1240	\$1450	\$1660	\$1845
In a double room	Superior main building land view	\$1340	\$1575	\$1810	\$2020
In a single room	Superior main building land view	\$2000	\$2400	\$2800	\$3175
1st Child (2-10.99)	Superior main building land view	\$400	\$400	\$400	\$375

On certain dates, especially during holidays, rates may be higher. Guests departing or returning on a Saturday pay a supplement of \$25 per way. High season supplement of \$50 for any departure between 11 and 25/8.



#### Mondays

BEY/BJV 09:30-11:00  
BJV/BEY 12:00-13:30

#### Thursdays

BEY/BJV 13:30-15:00  
BJV/BEY 16:00-17:30

#### Saturdays

BEY/BJV 19:00-20:30  
BJV/BEY 21:30-23:00



More information and pictures available on [hoojoozat.com/nakhalhotels](http://hoojoozat.com/nakhalhotels)



# RIXOS PREMIUM BODRUM - Bodrum Airport

5★ Deluxe - Ultra all inclusive

From 30 June till 3 September - Every Monday, Thursday & Saturday



Coup de cœur

Rates per person in US\$ including roundtrip air ticket with airport taxes, transfers, travel insurance and accommodation on **ultra all inclusive** basis.

**Rates per person**    4 nights 5 nights 6 nights 7 nights

## Deluxe garden view room

In a triple room	\$1235	\$1450	\$1665	\$1855
In a double room	\$1315	\$1550	\$1785	\$1995
In a single room	\$1795	\$2150	\$2505	\$2835
1st Child (2-11.99)	\$375	\$375	\$375	\$350

## Deluxe sea view room

In a triple room	\$1315	\$1550	\$1785	\$1995
In a double room	\$1395	\$1650	\$1905	\$2135
In a single room	\$1895	\$2275	\$2655	\$3010
1st Child (2-11.99)	\$375	\$375	\$375	\$350

## Premium room sea view

In a triple room	\$1355	\$1600	\$1845	\$2065
In a double room	\$1435	\$1700	\$1965	\$2205
In a single room	\$1975	\$2375	\$2775	\$3150
1st Child (2-11.99)	\$375	\$375	\$375	\$350
2nd Child (2-11.99)	\$915	\$1050	\$1185	\$1295

Minimum stay 3 nights.

On certain dates, especially during holidays, rates may be higher. Guests departing or returning on a Saturday pay a \$25 supplement per way.

High season supplement of \$50 for any departure between 11 and 25/8.



## Mondays

BEY/BJV 09:30-11:00  
BJV/BEY 12:00-13:30

## Thursdays

BEY/BJV 13:30-15:00  
BJV/BEY 16:00-17:30

## Saturdays






BEY/BJV 19:00-20:30  
BJV/BEY 21:30-23:00



More information and pictures available on [hoojoozat.com/nakhalhotels](http://hoojoozat.com/nakhalhotels)

## PACKAGE RATES

Rates per family or couple in US\$ including roundtrip air tickets with airport taxes, transfers, travel insurance and accommodation on **ultra all inclusive** basis

Rates per family or couple	Deluxe garden view				Deluxe sea view			
	4 nights	5 nights	6 nights	7 nights	4 nights	5 nights	6 nights	7 nights
Small family 	\$2930	\$3400	\$3870	\$4265	\$3090	\$3600	\$4110	\$4545
Standard family 	\$4085	\$4750	\$5415	\$5980	\$4085	\$4750	\$5415	\$5980
Medium family 	\$5560	\$6500	\$7440	\$8255	\$5880	\$6900	\$7920	\$8815
Large family 	\$5860	\$6800	\$7740	\$8530	\$6180	\$7200	\$8220	\$9090
Honeymooners 	\$2580	\$3050	\$3520	\$3990	\$2740	\$3250	\$3760	\$4270

On certain dates, especially during holidays, rates may be higher. Guests departing or returning on a Saturday pay a supplement of \$25 per way. High season supplement of \$50 for any departure between 11 and 25/8.

- Small family : Parents + 1 child under 12
- Standard family : Parents + 2 children under 12
- Medium family : Parents + 3 children under 12
- Large family : Parents + 4 children under 12

### Notes:

- 1) Standard families at Rixos Premium Bodrum stay in premium sea view rooms.
- 2) Medium and large families stay in 2 deluxe rooms.





Twin room



Double room



Beach



Pool



Beachfront



Kids pool



Kids' activities



Baby's cribs



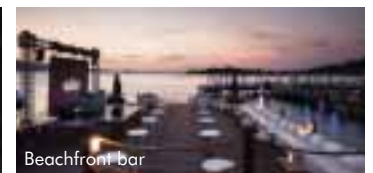
Spa



Spa



Mojito bar



Beachfront bar



Sushi restaurant



Radika restaurant

BODRUM - TURKEY

3 FLIGHTS PER WEEK - DAYTIME FLIGHTS

# MANDARIN ORIENTAL HOTEL - Bodrum Airport

5★ Deluxe - Bed and breakfast

From 30 June till 3 September - Every Monday, Thursday & Saturday



More information and pictures available on [hoojoozat.com/nakhalhotels](http://hoojoozat.com/nakhalhotels)

**3 FLIGHTS PER WEEK - DAYTIME FLIGHTS**

**BODRUM - TURKEY**

# CARESSE A LUXURY COLLECTION RESORT & SPA, BODRUM - Bodrum Airport

**5★ Deluxe - Bed and breakfast**

From 30 June till 3 September - Every Monday, Thursday & Saturday



More information and pictures available on [hoojoozat.com/nakhalhotels](http://hoojoozat.com/nakhalhotels)

# THE BODRUM BY PARAMOUNT HOTELS & RESORTS

- Bodrum Airport

5★ Deluxe - Bed and breakfast

From 30 June till 3 September - Every Monday, Thursday & Saturday



More information and pictures available on [hoojoozat.com/nakhalhotels](http://hoojoozat.com/nakhalhotels)

**3 FLIGHTS PER WEEK - DAYTIME FLIGHTS**

**BODRUM - TURKEY**

# THE BODRUM EDITION - Bodrum Airport

5★ Deluxe - Bed and breakfast

From 30 June till 3 September - Every Monday, Thursday & Saturday



## **Mondays**

BEY/BJV 09:30-11:00  
BJV/BEY 12:00-13:30

## **Thursdays**

BEY/BJV 13:30-15:00  
BJV/BEY 16:00-17:30

## **Saturdays**

BEY/BJV 19:00-20:30  
BJV/BEY 21:30-23:00



More information and pictures available on [hoojoozat.com/nakhalhotels](http://hoojoozat.com/nakhalhotels)